



### High conversion efficiency

High efficiency rate up to 18.04%, higher yield per surface area, higher rate of return on investment.



### Easy Installation and Handling

For various applications



### Outstanding low irradiation performance

Excellent module efficiency even in the weak light conditions, such as morning or cloudy.



### Excellent loading capability

2400Pa wind loads, 5400Pa snow loads.



### 0 to +5W positive tolerance

Detailed information in Electrical Specifications



### Durability against extreme environmental

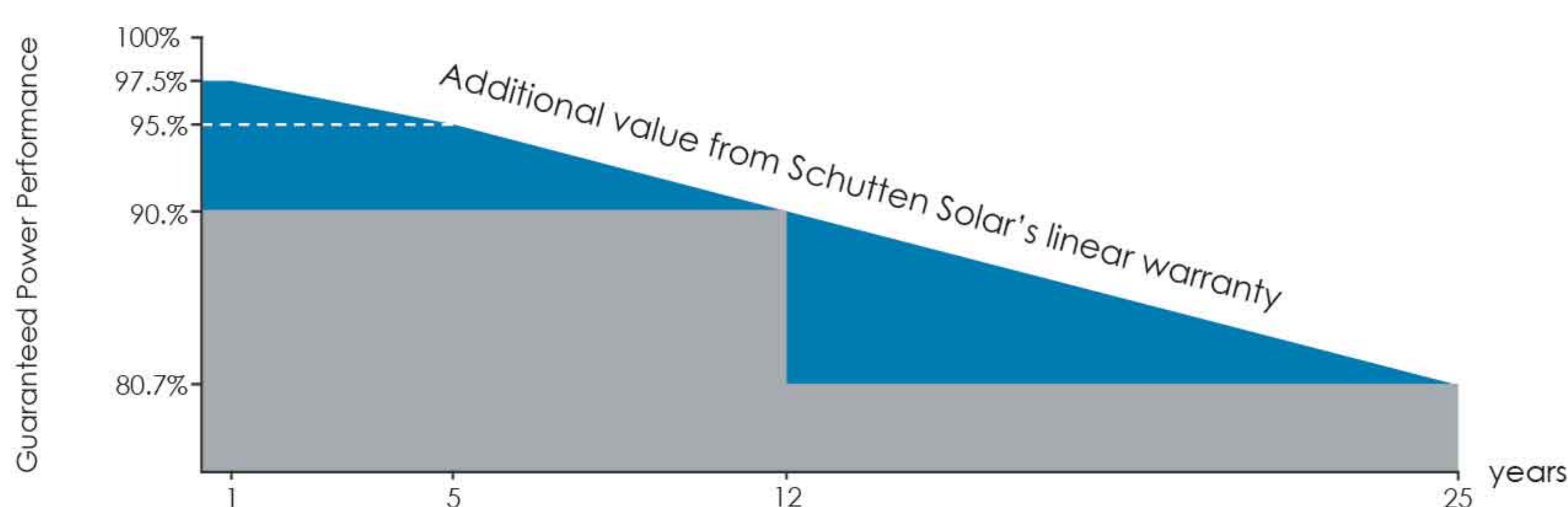
High salt mist and ammonia resistance certified by TUV NORD



### 4BB/5BB Solar Cell:

adopts new technology to improve the efficiency of modules, offers a better aesthetic appearance, perfect for rooftop installation.

## LINEAR PERFORMANCE WARRANTY



**12 YEARS** Guarantee on product material and workmanship



**25 YEARS** Linear power output warranty

## CERTIFICATES



## INSURANCE



## Anhui Schutten Solar Energy Co.,Ltd

Schutten Solar (Nanjing) :Room 1812, Building A, Wanda Plaza, No.102 Middle Jiangdong Road, Nanjing, Jiangsu, China 210019

Schutten Solar (Chuzhou) :Weisan Road, Quanjiao Economy and Development Area Chuzhou, Anhui, China 239500

Schutten Solar (Thailand) :1999/24 District Sriwara, Soi Ladprao 94 (Panjarnit), Plubpla, Wang Thong Lang, Bangkok, Thailand, 10310



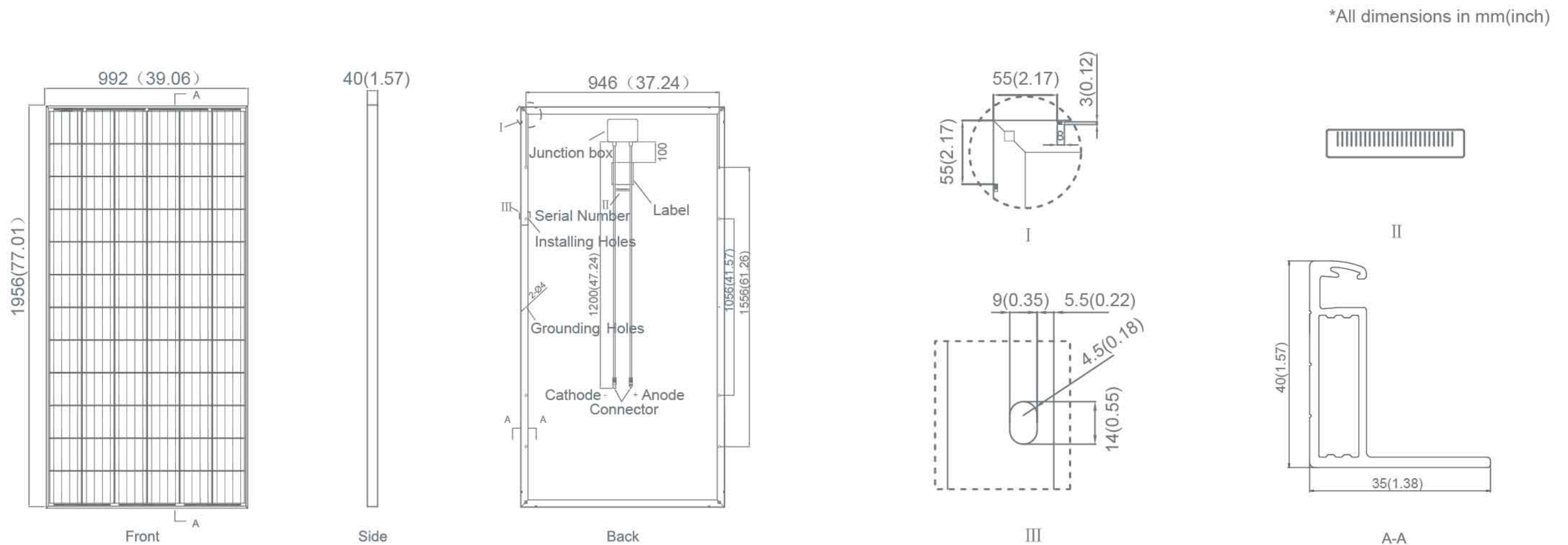
www.schutten-solar.com

# Electrical Characteristics

Module Type	STM6-300/72	STM6-310/72	STM6-320/72	STM6-330/72	STM6-340/72	STM6-350/72
	STC	STC	STC	STC	STC	STC
Maximum Power (Pmax)	300Wp	310Wp	320Wp	330Wp	340Wp	350Wp
Maximum Power Voltage (Vmp)	36.06V	36.65V	37.26V	37.72V	38.34V	38.81V
Maximum Power Current (Imp)	8.32A	8.46A	8.59A	8.75A	8.87A	9.02A
Open-circuit Voltage (Voc)	44.12V	44.50V	45.52V	45.80V	46.45V	46.98V
Short-circuit Current (Isc)	8.97A	9.11A	9.23A	9.35A	9.46A	9.59A
Module Efficiency STC (%)	15.46%	15.98%	16.50%	17.01%	17.53%	18.04%
Operating Temperature(°C)	-40°C~+85°C		Temperature coefficients of Pmax		-0.41%/°C	
Maximum system voltage	1000VDC (IEC)		Temperature coefficients of Voc		-0.33%/°C	
Maximum series fuse rating	15A		Temperature coefficients of Isc		+0.03%/°C	
Power tolerance	(0, +5)		Nominal module operating temperature (NMOT)		45±2 °C	

STC: Irradiance 1000W/m<sup>2</sup> Cell Temperature 25°C AM=1.5

## Engineering Drawings



## Mechanical Characteristics

Cell Type	Mono-crystalline 156×156mm (6 inch)
No. of cells	72 (6×12)
Dimensions	1956×992×40mm (77.00×39.05×1.57 inch)
Weight	21.0 kg (46.3 lbs.)
Front Glass	3.2mm, High Transmission, Low Iron, Tempered Glass
Frame	Anodized Aluminium Alloy
Junction Box	IP67 Rated
Output Cables	4.0mm, Length: 1200mm
Connector	MC4 Compatible
Maximum Snow Load	550Kg/m <sup>2</sup>
Maximum Wind Load	200Km/h
Hailstone Impact Test	80Km/h for 25mm ice ball

## Packaging Configuration

Container	20' GP	40' HQ
Pieces Per Pallet	26 / 22 / 16	26 / 4
Pallets Per Container	5 / 5 / 1	24 / 12
Pieces Per Container	256	672

## Current-Voltage & Power-Voltage Curve

